

LOAD SUMMARY - MAIN SWBD. "MSB"

1. EXISTING PEAK DEMAND LOAD (NOTE #1)	735 KVA
2. 25% OF PEAK (PER CEC 220.87) (NOTE #2)	184 KVA
3. CONNECTED LOAD - GYM / LOCKER PROJECT (NOTE #3)	492 KVA
4. CONNECTED LOAD REMOVED - FEEDER MSB-14 (NOTE #4)	(288)KVA
NEW / ADDITIONAL CONNECTED LOAD - FEEDER MSB-14 (NOTE #5)	258 KVA

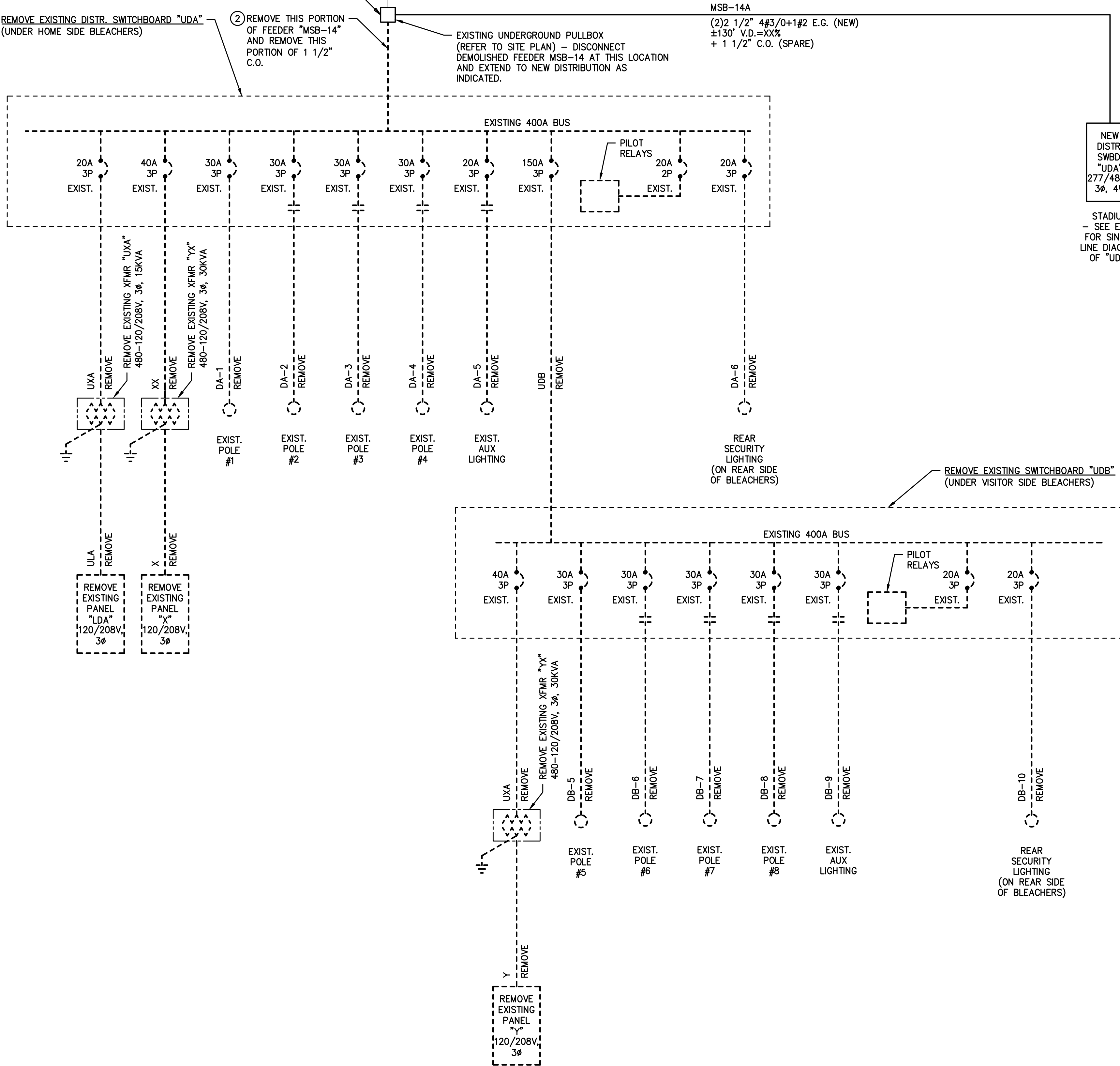
NEW / REVISED TOTAL LOAD - MAIN SWITCHBOARD "MSB"	1381 KVA
=	1663 AMPS @ 277/480-V, 3-PH, 4-W

LOAD SUMMARY NOTES

1. PEAK DEMAND FROM SCE - PER DSA PROJECT APPL #03-118224
2. MANDATED 'MARGIN OF ERROR' PER CA ELECTRICAL CODE SECTION 220.87
3. PER DSA APPROVED DRAWINGS - DATED 11/28/2018
(CONNECTED LOAD USED - PROJECT IS CURRENTLY UNDER CONSTRUCTION)
4. LOAD TO BE REMOVED - FROM LOADS INDICATED ON AS-BUILT DRAWINGS
5. NEW CONNECTED LOAD - PER SUMMARY ON SHEET E1.02

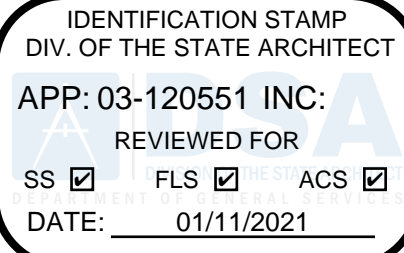
KEY NOTES - THIS SHEET ONLY

1. ELECTRICAL CONTRACTOR SHALL INSPECT EXISTING GROUNDING AND BONDING FOR CONFORMANCE WITH CEC/NEC ARTICLE 250, FROM POINT OF NEW CONNECTED LOADS BACK TO SERVICE ENTRANCE. IF EXCEPTIONS ARE NOTED, CONTRACTOR SHALL INITIATE RESOLUTION TO ACHIEVE COMPLIANCE REGARDING GROUNDING AND BONDING WITH THE CALIFORNIA/NATIONAL ELECTRICAL CODE.
2. IN ADDITION TO FEEDER MSB-14, THIS RUN INCLUDES A 1 1/2" C.O. FROM MSB TO EXISTING STADIUM.



SINGLE LINE DIAGRAM

NO SCALE



REVISIONS



NORWALK LA MIRADA UNIFIED SCHOOL DISTRICT
LA MIRADA HIGH SCHOOL NEW FOOTBALL
STADIUM PROJECT
13520 ADELA DRIVE, LA MIRADA, CA 90638

DSA # 03-120551

NAC
ARCHITECTURE

NAC NO. 161-19015
DATE 12/10/2020

DSA BACKCHECK
SUBMISSION

SINGLE LINE DIAGRAM
- MAIN SWITCHBOARD
"MSB"

E1.01